

# COMPANY PROFILE



Saroma Engineering Supplies Limited is a registered private company that was incorporated and registered in Kenya by the Registrar of Companies and registration number CPR/2010/17346 on 2nd February 2010

---

# TABLE OF CONTENTS

<u>SL NO</u>	<u>DESCRIPTION</u>	<u>PAGE NUMBER</u>
01	Introduction -----	02
02	Vision   Mission   Values -----	03
03	OUR PRODUCTS -----	04
04	WHY CHOOSE SAROMA -----	07
05	CORPORATE ORGANIZATION CHART -----	08
06	Contact Us -----	09

# INTRODUCTION

**Saroma Engineering Supplies Limited** is a registered private company that was incorporated and registered in Kenya by the Registrar of Companies and registration number **CPR/2010/17346** on 2nd February 2010.

We undertake the business of supply and service of agricultural ,electrical, mechanical and Construction quipment that include agricultural tractors, generators, water pumps, farm implements among others. We are

**Among our products range include:**

**1) WATER PUMPS** - KSB PUMPS,GRUNDFOS,SOLAR WATER EQUIPMENT,BOREHOLE SUBMERSIBLE PUMPS BOOSTER PUMPS,INDUSTRIAL CENTRIFUGAL PUMPS,WATER METRES,STEEL AND PLASTIC PIPES.

**2)ELECTRICAL/MECHANICAL EQUIPMENT:** POWER GENERATORS ( Perkins ,Cummins ,Lister Petter, Volvo, Deutz etc),ELECTRICAL MOTORS (SINGLE & THREE PHASE) ELECTRIC CABLES AND ACCESSORIES,CONTROL PANNELS,ELECTRICAL LIGHTING SYSTEMS

**3)CONSTRUCTION EQUIPMENT:**GRADERS, EXCAVATORS, BACK HOE LOADERS,WHEEL LOADERS,TIPPERS AMONG OTHERS

**4)AGRICULTURAL MACHINERY:** TRACTORS,PLOUGHING IMPLEMENTS, SEEDING AND PLANTING EQUIPMENT,FERTILIZER SPREADERS,HAY AND SILAGE EQUIPMENT,HARVESTING AND POST HARVEST EQUIPMENT,DAIRY EQUIPMENT( FEEDING AND MILK PROCESSING)

The company's strengths are derived from the staff and partners' crucial business networks in the Kenyan & larger eastern Africa agricultural sector; their professional training and the excellent business contacts/partnerships with world renowned principals and local dealers.





## VISION

The company's strengths are derived from the staff and partners' crucial business networks in the Kenyan & larger eastern Africa agricultural sector; their professional training and the excellent business contacts/partnerships with world renowned principals and local dealers.




## MISSION


To be the reliable distributor of quality agricultural and construction equipment/machinery/plant, related spare parts and services through timely deliveries, strategic response and competitively priced wide product range.




## OUR CORE VALUES

We believe that our success is best reflected through the success of our customers and clients, our new program participants and all those whom we are able to touch with our services. Our beliefs and values define what we stand for and determine how we work. The hallmark of our approach comprises of the following values we stand on:

 **INTEGRITY:** We believe in ourselves, in our clients. We know what we can do, we say what we know and we do what we say. We believe in doing the right thing just because it is right.

 **Ethical Business:** We choose to be ethical in our business conduct. We believe that knowledge is a pure form of giving and sharing. This purity is what constitutes our ethics.

 **Commitment:** We are committed to performance, accepting no excuses for failures and believing in delivering just great results. We are also committed to quality and service at each level of our interaction with our client to ensure the success of our client, which is our ultimate goal.

 **Our Team:** Encourage personal and professional growth and maximise in individual and team performance.

 **Our Expertise:** Over the years Saroma Group has developed unique expertise in providing growth

*Saroma has strategic local presence in the market place to deliver solutions and dealer/manufacturers' value to the customers' enterprises. We currently operate out of Nairobi, Kisumu, Eldoret and Bungoma offices.*



## OUR PRODUCTS / EQUIPMENT

### 1. Water Pumps

KSB PUMPS,GRUNDFOS,SOLAR WATER EQUIPMENT,BOREHOLE SUBMERSIBLE PUMPS BOOSTER PUMPS,INDUSTRIAL CENTRIFUGAL PUMPS,WATER METRES,STEEL AND PLASTIC PIPES.



KSB Pumps



Grundfos



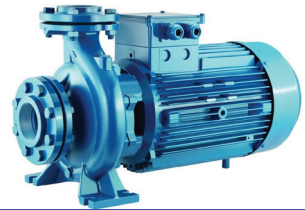
Solar Water Equipment



Borehole Submersible Pumps



Booster Pumps



Industrial Centrifugal Pumps



Water Metres



Steel Pipes



Plastic Pipes

Our pumps are engineered with cutting-edge technology to deliver unmatched performance and reliability. With a focus on efficiency and durability, our pumps ensure optimal water flow in various applications. Trust us for the best water pumps that meet your needs with excellence.

## 2. Electrical / Mechanical Equipment

POWER GENERATORS ( Perkins ,Cummins ,Lister Petter, Volvo, Deutz etc),ELECTRICAL MOTORS (SINGLE & THREE PHASE) ELECTRIC CABLES AND ACCESSORIES,-  
CONTROL PANNELS,ELECTRICAL LIGHTING SYSTEMS



Single Phase Motor



Three Phase Motor



Electric Cables



Perkins Generator



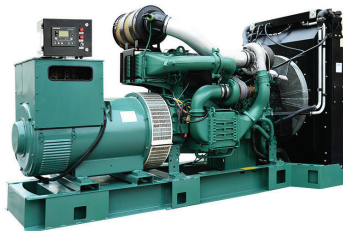
Pramac Generators



Cummins Generator



Petrol Generator



Volvo Generators



Control Panels

## 3. Construction Equipment

GRADERS,EXCAVATORS,BACK HOE LOADERS,WHEEL LOADERS,TIPPERS AMONG  
OTHERS



Graders



Excavator



Backhoe Loaders



### 3. Construction Equipment...



Wheel Loader



Stone Crusher



Concrete Mixer

### 4. Agricultural Equipment

**MACHINERY:TRACTORS, PLOUGHING IMPLEMENTS, SEEDING AND PLANTING EQUIPMENT, FERTILIZER SPREADERS, HAY AND SILAGE EQUIPMENT, HARVESTING AND POST HARVEST EQUIPMENT, DAIRY EQUIPMENT( FEEDING AND MILK PROCESSING)**



Tractor



Claas Baler



Oil Expellers



Fimaks Feed Mixer



Walking Tractors



Disc Plough



Dairy and Processing Equipment



Milking Machine



Ploughing Implements

## WHY CHOOSE OUR EQUIPMENT?

Our machines are meticulously crafted to be the epitome of quality and functionality. Each component is designed with precision and attention to detail, ensuring seamless performance and reliability. From advanced automation features to robust construction, our machines are built to withstand rigorous industrial environments while delivering consistent results. Certainly, below are the reasons why you should choose our machinery and equipment:

01

### Quality Assurance:

Our machinery is built to the highest standards, ensuring quality performance and longevity.

02

### Reliability

You can count on our equipment to deliver consistent results, minimizing downtime and maximizing productivity.

03

### Efficiency

Our machinery is designed for optimal efficiency, helping you streamline your processes and reduce waste improving output.

04

### Customization

Whether it's adjusting specifications or adding extra features, we can accommodate your requirements.

05

### Technical Support

We provide comprehensive technical support to assist you with installation, maintenance, and troubleshooting.

06

### Safety

Our machinery incorporates advanced safety features to protect your workers and prevent accidents, ensuring a secure working environment.

07

### Innovation

We continuously innovate to stay ahead of industry trends and incorporate the latest advancements into our machinery.

08

### Cost-effectiveness

Despite the high quality and advanced features, our machinery offers excellent value for money.

09

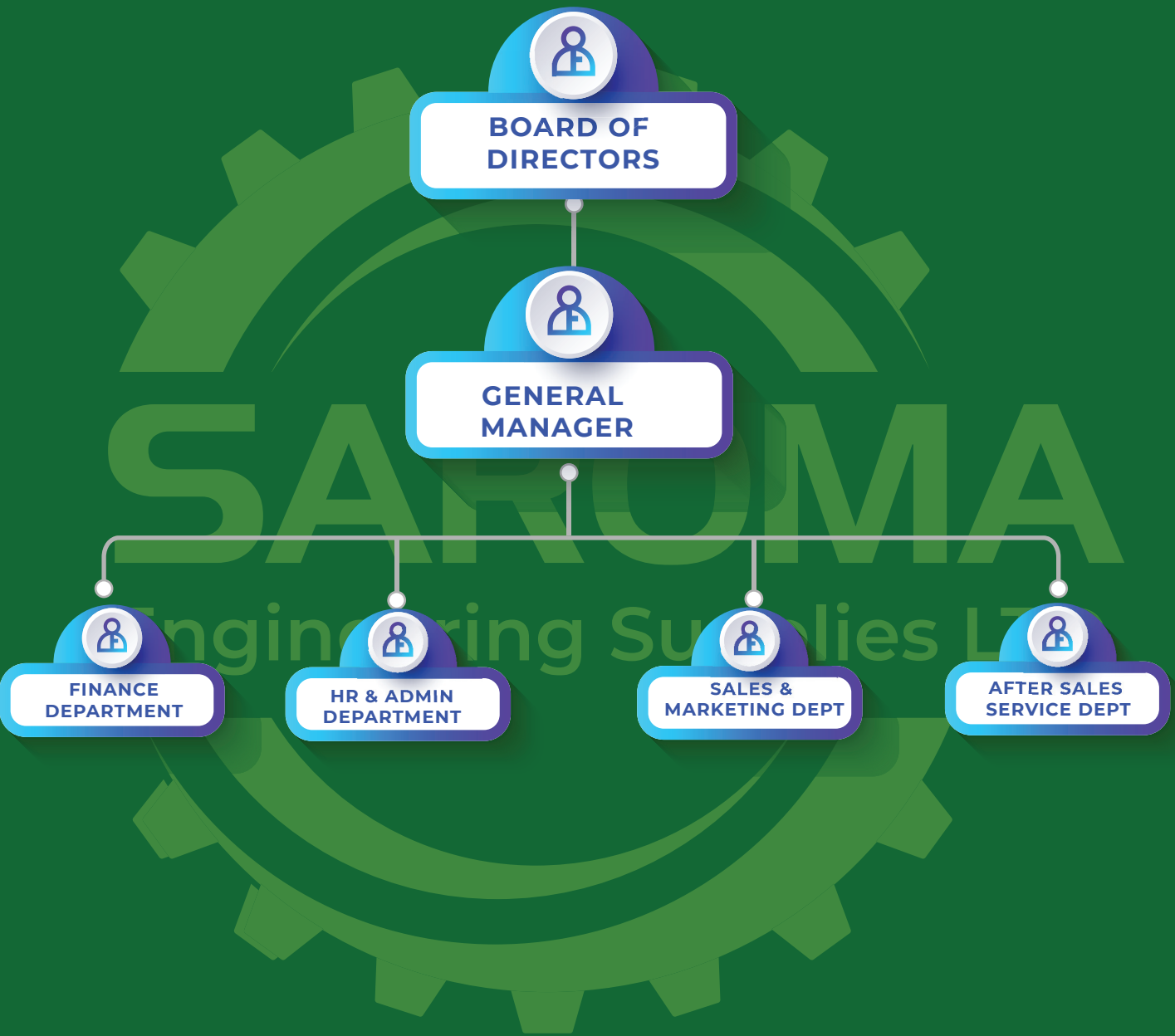
### Sustainability

Our machines are designed to optimize resource utilization and minimize environmental impact, helping you meet sustainability goals.

Choosing our machines means investing in the future of your business, where quality meets performance to drive success.



CORPORATE ORGANIZATION CHART





## CONTACT US

### NAIROBI OFFICE

+254 797 171 860

nairobi@saromaengineering.com

Nairobi.

www.saromaengineering.com

### ELDORET OFFICE

+254 745 258 538

eldoret@saromaengineering.com

Eldoret.

www.saromaengineering.com

### KISUMU OFFICE

+254 729 979 500

kisumu@saromaengineering.com

Kisumu.

www.saromaengineering.com

### NAKURU OFFICE

+254 723 342 922

nakuru@saromaengineering.com

Nakuru.

www.saromaengineering.com